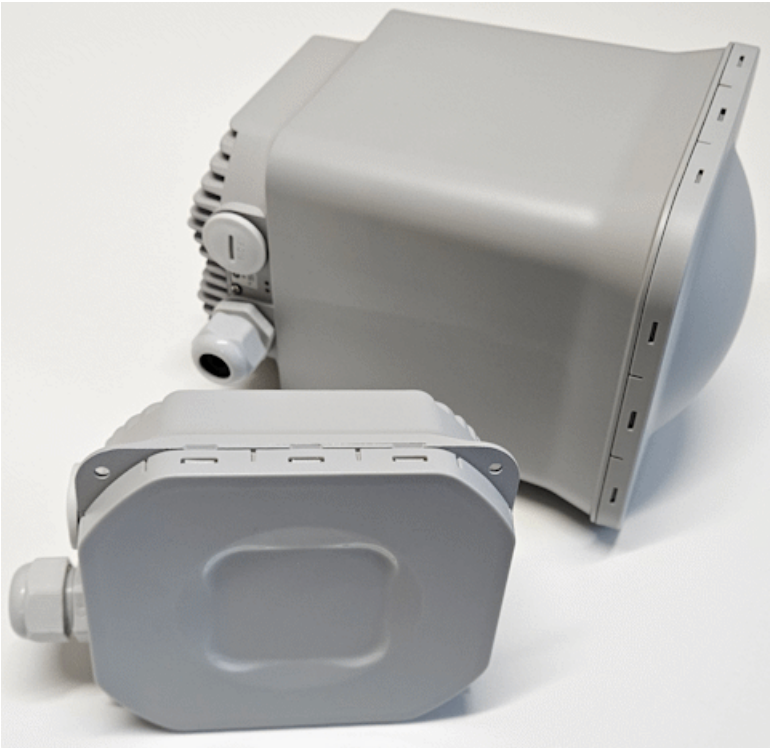


AltoReach Quick Start Guide



AltoReach box contents

- ☞ AltoReach radio with IP67 cable gland and IP67 covering plug.
- ☞ 24w gigabit PoE power supply and power cable
- ☞ Band clamp.

S150 only

- ☞ 150mm antenna
- ☞ Mounting screws (4)

Optional Mounting bracket, ordered separately

- ☞ Model number AX-AR-PREC-MT

Connect to the radio

- 1 Use the supplied PoE injector to power the device:
 - a. Plug an Ethernet cable into the PoE port on the injector.
 - b. Plug the other end of the cable into the ETH0 port on the AltoReach radio.
 - c. Plug the injector's power cord into a electrical outlet.
- 2 Configure your computer's networking to be a member of the 192.168.0.x subnet and connect the computer to the LAN port of the PoE injector.
- 3 Access the WebUI by typing **192.168.0.1** in your browser's address bar.
 - Username: **admin**
 - Password: **admin**
- 4 When prompted, change the password of the admin user and select the country.

Note: If you forget the admin user password and no other users with admin privileges are configured, a factory reset will be required.

The WebUI will open to the **Dashboard**.

Configure the radio

Set the device name, location, and hostname to unique values

- 1 Log into the AltoReach radio as described in [Connect to the radio](#).
- 2 In the WebUI, click **Configuration**.
- 3 Click **System**.
- 4 For **Device name**, enter a unique device name.

Device name is used to identify the device with **Tools > Device discovery**.

- 5 Set the **Device location**.

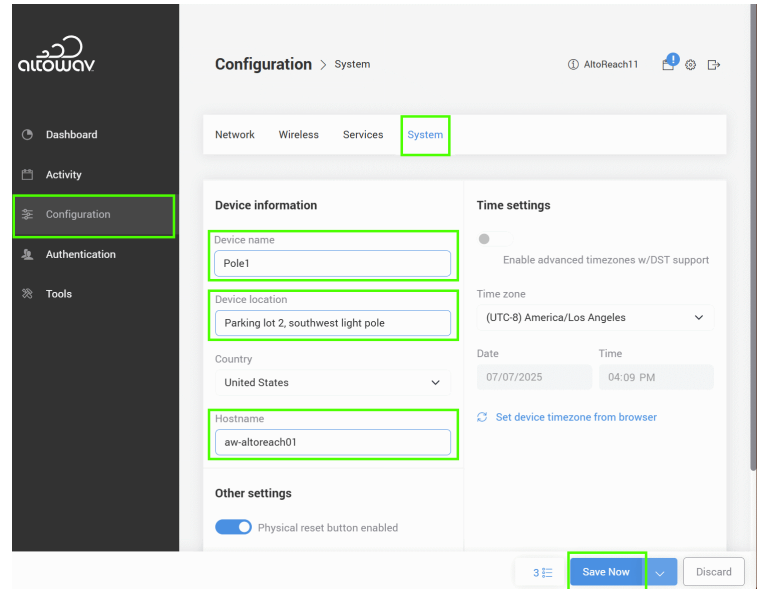
Device name and **Device location** can be used to describe the physical location and other information about the device. For example:

- **Device name:** Pole1
- **Device location:** Parking lot 2, southwest light pole

- 6 For **Hostname**, set a unique hostname.

Hostname will be used for DHCP requests if the device is set to **DHCP client** mode.

- 7 Click **Save Now**.



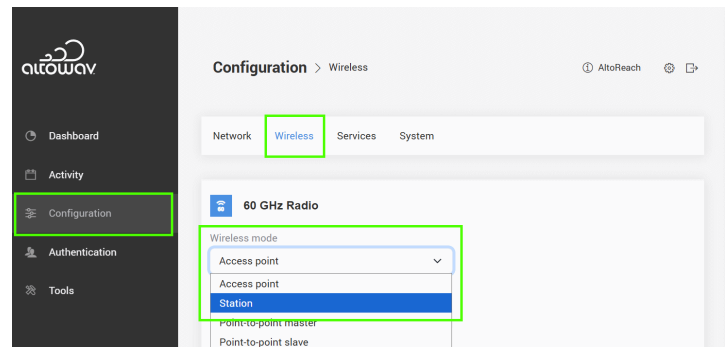
Configure the Wireless mode

By default, the **Wireless mode** of the AltoReach AP90 is set to **Access point**, and the AltoReach S150 is set to **Station**.

- For point-to-multipoint links using one AP90 and multiple S150s, leave the radios at their default settings.
 - For point-to-multipoint links using only AP90s:
 - ◆ The AP90 connected to the backhaul network should be left in **Access point** mode.
 - ◆ Remote AP90s should be changed to **Station** mode.
- For point-to-point links, one radio should be set to **Point-to-point master**, and one to **Point-to-point slave**.

To configure the **Wireless mode**:

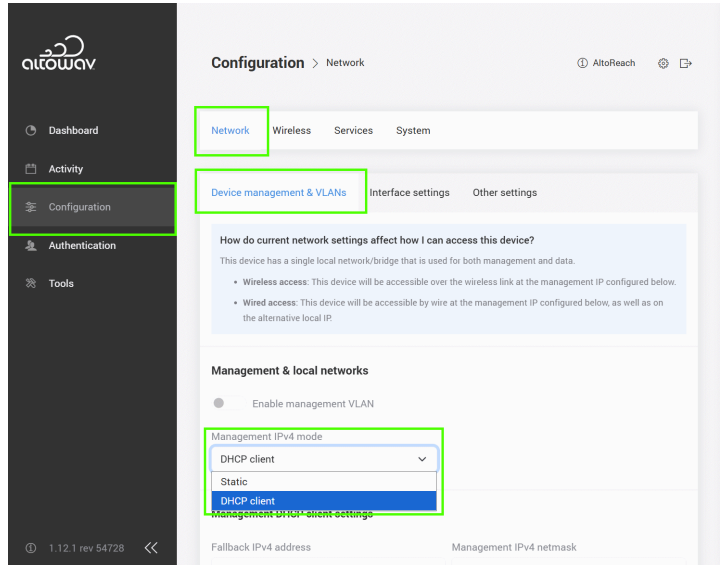
- 1 Log into the AltoReach radio as described in [Connect to the radio](#).
- 2 In the WebUI, click **Configuration**.
- 3 Click **Wireless**.
- 4 For **Wireless mode**, select the appropriate option.
- 5 Click **Save & Reboot**.



Configure the IP address

All AltoReach devices default to a static IP of 192.168.0.1. You should change the IP address before establishing a link, to ensure that you access the correct radio during maintenance activities. Radios can be configured to use an alternative static IP address, or configured to be DHCP clients and have their IP address assigned by an upstream DHCP server.

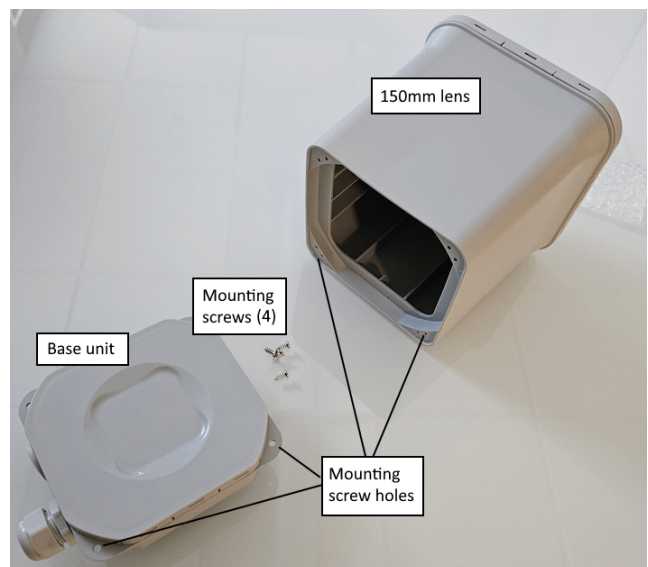
- 1 Log into the AltoReach radio as described in [Connect to the radio](#).
- 2 In the WebUI, click **Configuration**.
- 3 Click **Network**.
- 4 Click **Device management & VLANs**.
- 5 Do one of the following:
 - Change the static IP address of the radio:
 - i. For **IP address**, type the new static IP address for the radio.
 - ii. For **Netmask**, change the netmask if necessary.
 - iii. For **Gateway**, type the IP address of the default gateway.
 - iv. For **DNS servers**, type the IP addresses of the primary and secondary DNS servers.
 - v. Click **Save Now**.
 - Configure the radio as a DHCP client:
 - i. For **Management IPv4 mode**, select **DHCP client**.
 - ii. Click **Save Now**.
- 6 Repeat this procedure for each AltoReach radio.



S150 only – Mount the 150 mm antenna to the base unit

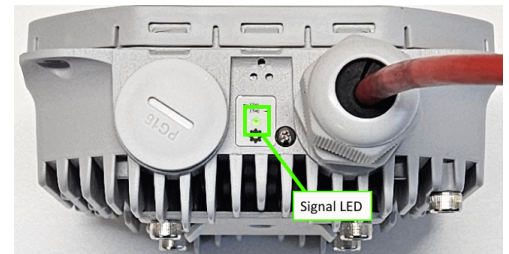
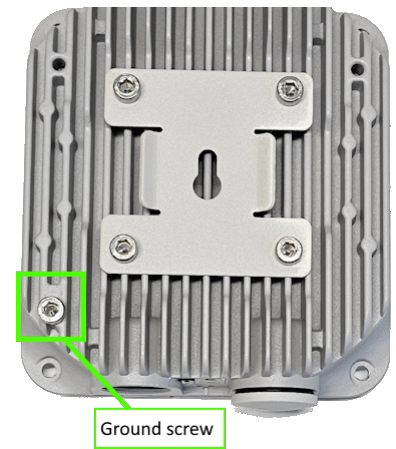
The S150 comes with:

- The base unit.
 - A 155 mm antenna.
 - Four mounting screws.
- 7 Place the top of the base unit into the bottom opening of the antenna.
Mounting holes in the base unit should align with mounting holes in the antenna.
 - 8 Using a Philips head screwdriver, attach the base unit to the antenna with the four provided mounting screws.



Installation

- 1 Attach a ground wire to the ground screw.
Local codes determine whether grounding is required or optional.
- 2 Securely mount the radio on a pole or wall with clear line of sight (LOS) to other AltoReach radios.
 - Use the mounting bracket (Model number AX-AR-PREC-MT) for a secure mount.
- 3 Connect to PoE:
 - a. Using the provided IP67 cable gland, install Cat6 cable into the ETH0 Ethernet port of the AltoReach and the other end into the PoE injector/switch.
 - b. Power up the PoE injector/switch.
- 4 Verify power.
 - The Signal LED flashes with a fast blink speed while the AltoReach radio is powering up.



LEDs

Signal LED	<ul style="list-style-type: none"> • Off — The device is currently operating in AP mode, the device is powered off, or the radio modem is not detected. • Blinking slowly — The device is in station or PTP mode and is currently scanning. • Blinking with a medium speed — The device is in station or PTP mode and is connected with a low signal. • Blinking fast: <ul style="list-style-type: none"> ○ Case 1 — If the unit is just booting up, the device is flashing the internal modem firmware. ○ Case 2 — If the unit is fully booted, then the device is in station or PTP mode and connected to an AP with a medium signal strength. • Solid — The device is in station or PTP mode and connected with an excellent signal strength.
ETH0 Ethernet port LEDs	The link light will turn on when a link is established, and the power light will turn on once the device is supplied with power.
ETH1 Ethernet port LEDs	The link light will turn on and blink when a link is established, and the PoE out light will turn on when PoE out is enabled in software.

Related documentation

AltoReach User Guide https://www.altowav.com/technology/assets/pdf/AltoReach_User_Guide.pdf



Technical support

Altowav is committed to providing our customers with high quality technical support. Contact us at:

✉ support@altowav.com

🌐 support.altowav.com